



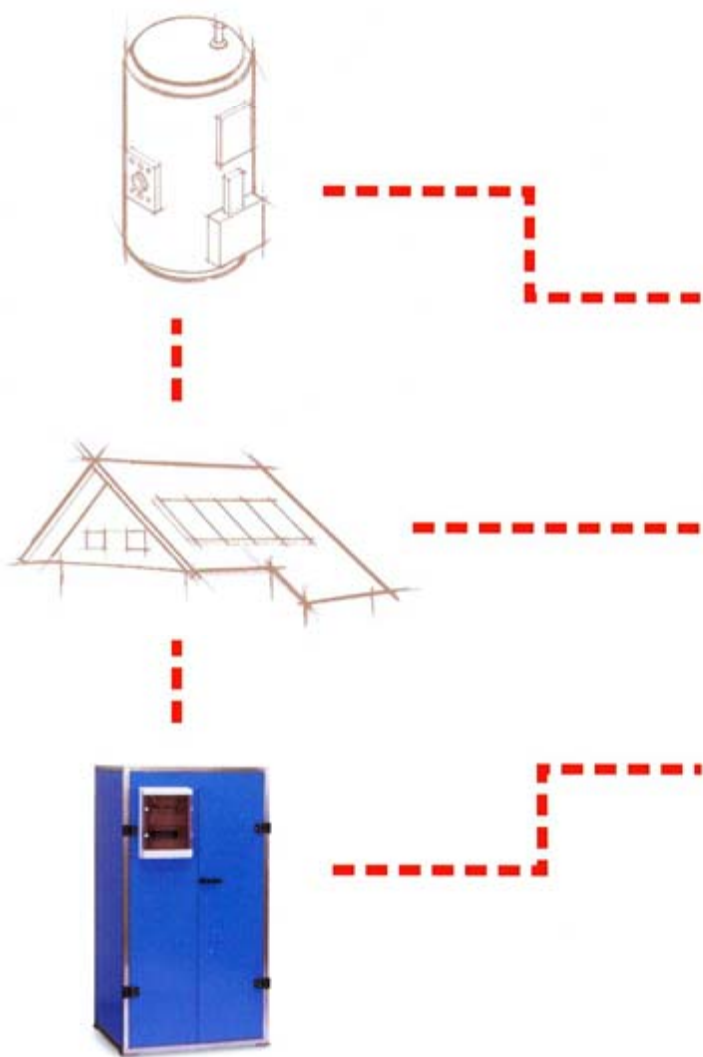
B.*line* Heat Exchangers



ERsee
L I N E

Typical residential applications

- In-floor heating
- swimming pools, spas, hot tubs
- driveway snowmelts

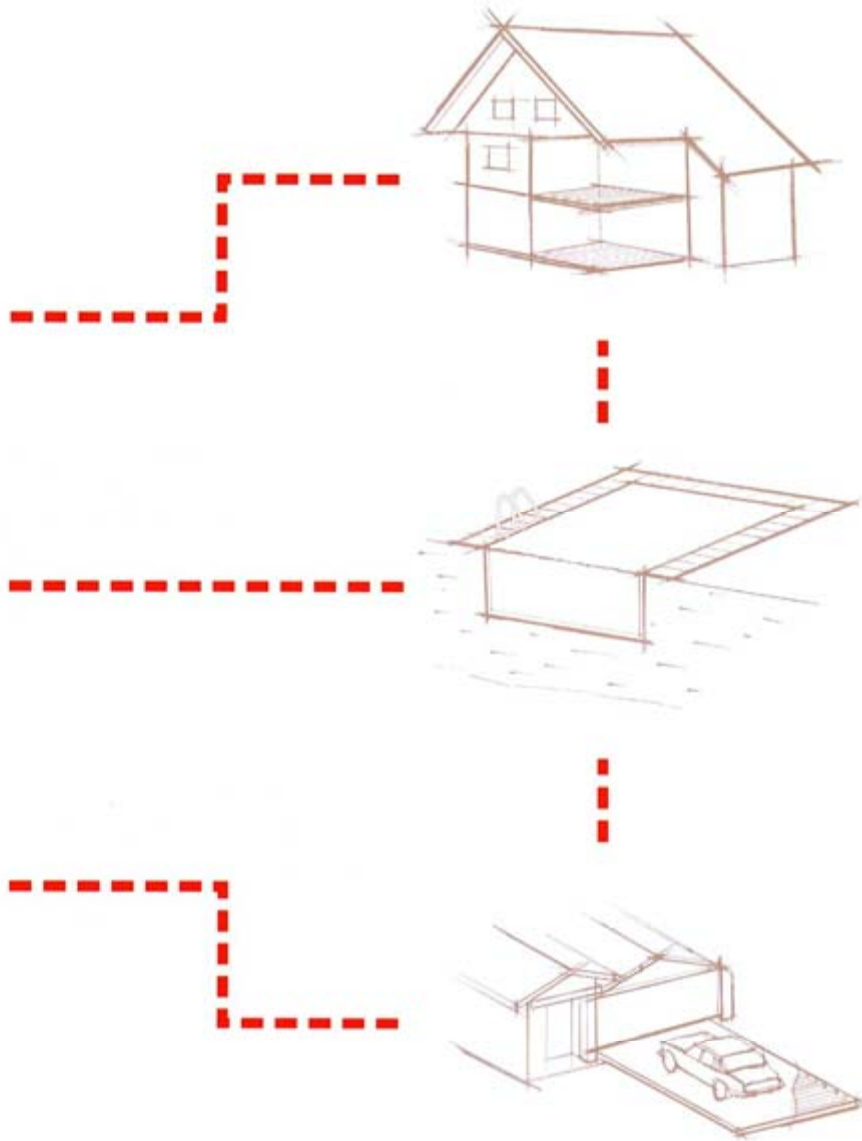


Typical industrial applications

- oil coolers
- transmission and engine coolers
- boiler sample coolers
- waste water heat recovery

Choosing the right B-line Heat Exchanger

Selection of the correct heat exchanger will guarantee you performance at the right price.



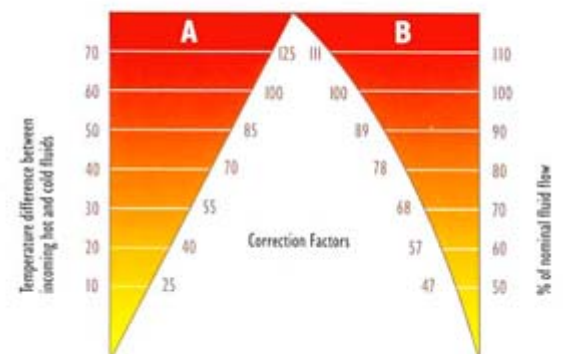
Your Benefits

- Designed to perform at high fluid velocities with low pressure drops
- Made entirely of high quality, specially treated AISI 316L stainless steel to ensure superior corrosion resistance and longer product life
- Induced self-cleansing feature - one less thing to worry about

Table I Fluid Correction Factors

Fluid	$F \times 10^2$
Water	1.00
Ethylene Glycol 30%	0.92
Ethylene Glycol 50%	0.85
Propylene Glycol 30%	0.94
Propylene Glycol 50%	0.89
Oil SAE 10	0.50
Hydraulic Oil ISO VG22	0.45

Chart I Temperature ($^{\circ}\text{C}$) and Flow Rate Correction Factors



Step 1

Record incoming temperatures and fluid flows

Example: (based on performance of **B 180**)

Temp. of incoming boiler water = 60°C (140°F)

Temp. of incoming pool water = 10°C (50°F)

Flow of boiler water = 26.5 l/min (7 USGPM)

Flow of pool water = 189 l/min (50 USGPM)

Step 2

Calculate

Calculate temp. difference between incoming fluids: 60°C - 10°C = 50°C

From Table 2 Calculate percentage of nominal hot water flow: 26.5/30 x 100%=88.3%

From Table 2 Calculate percentage of nominal cold water flow: 189/210 x 100%=90%

From Table 2 Obtain nominal capacity of heat exchanger (c.g. B-180=53kW)

Step 3

Read correction factors

Read correction values from chart 1

A=85 for temperature difference 50°C

B_{hot}=87 for 88.3% of hot flow

B_{cold}=89 for 90% cold flow

From fluid correction table (Table 1) for water

both hot and cold fluids are F_{hot}=F_{cold}= 1.00 x 10⁻²

Step 4

Solution

$$\text{Corrected Thermal Output} = \text{Nominal Capacity} \times A \times F_{hot} \times F_{cold} \times \sqrt{B_{hot} \times B_{cold}}$$

$$\text{Corrected Thermal Output} = 53 \times 85 \times 0,01 \times 0,01 \times \sqrt{87 \times 89} = 39,6 \text{ kW (135,115 BTU/h)}$$

Notes: °C=(°F - 32)x 5/9, 1 USGPM = 3.78 l/min

Table 2 Nominal Values

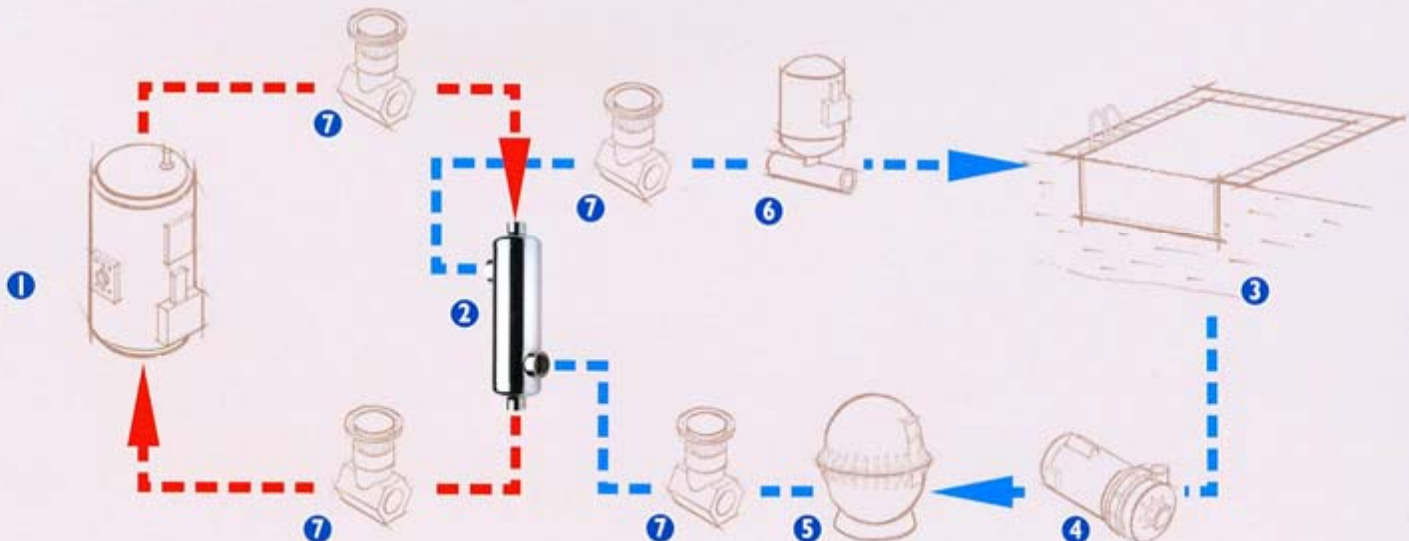
Nominal values are based on 60°C (140°F) temperature between incoming heating and heated water.

Model	Nominal Capacity	Hot Water Flow		Cold Water Flow	
	kW	l/min	(USGPM)	l/min	(USGPM)
B 45	13	23	(6.08)	150	(39.63)
B 70	20	25	(6.60)	170	(44.91)
B 130	38	27	(7.13)	200	(52.83)
B 180	53	30	(7.93)	210	(55.48)
B 250	73	35	(9.25)	270	(71.33)
B 300	88	40	(10.57)	300	(79.25)
B 400	117	46	(12.42)	342	(90.10)
B 500	146	55	(14.53)	360	(95.10)
B 1000	293	95	(25.10)	705	(185.24)

Table 3 Quick Sizing Reference

Model	Pool Capacity	
	m ³	USGAL
B 45	12	3.000
B 70	24	6.000
B 130	40	11.000
B 180	60	16.000
B 250	80	22.000
B 300	100	27.000
B 400	130	34.000
B 500	170	44.000
B 1000	330	88.000

Figure 2 Typical swimming pool installation





.....

B·line

.....

We are pleased to introduce our new revolutionary line of **B Heat Exchangers**.

.....

Thanks to our patented helically corrugated tube design, the B Heat Exchangers can deliver excellent thermal performance even with fouled heating media.

.....



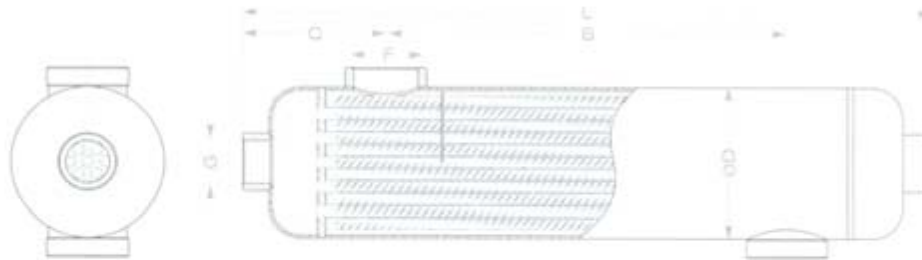
Performance you desire

Quality you deserve

Table 4 Heat Exchanger Nominal Performance

Heat Exchanger Type	Nominal Capacity		Hot Water				Cold Water			
			Flow		Pressure drop		Flow		Pressure drop	
	kW	Btu/hr	l/min	USGPM	kPa	psig	l/min	USGPM	kPa	psig
B 45	13	45,000	23	6.08	6.2	0.90	150	39.63	7.4	1.07
B 70	20	70,000	25	6.60	7.5	1.09	170	44.91	9.2	1.33
B 130	38	130,000	27	7.13	8.1	1.17	200	52.83	11.4	1.65
B 180	53	180,000	30	7.93	2.7	0.40	210	55.48	7.5	1.10
B 250	73	250,000	35	9.25	4.2	0.60	270	71.33	12.0	1.70
B 300	88	300,000	40	10.57	6.4	0.90	300	79.25	17.0	2.50
B 400	117	400,000	46	12.42	7.8	1.13	342	90.10	20.0	2.90
B 500	146	500,000	55	14.53	9.2	1.30	360	95.10	22.0	3.20
B 1000	293	1,000,000	95	25.10	16.2	2.35	705	185.24	29.1	4.22

Nominal values are based on 60°C (140°F) temperature difference between incoming heating and heated water



Standard Materials:

316 L Stainless Steel,
Titanium

Maximum Allowable Working Pressure:

SS 316 L 1.72 MPa (250 psig)
Titanium 1.03MPa (150 psig)

Maximum Allowable Working Temperature:

SS 316 L 208°C (406°F)
Titanium 190°C (375°F)

Table 5 Advanced B Series Stainless Steel - 316L

Type	L	A	B	C	D	F	G	Heat Transfer Area
			mm (in)					m ² (sq.ft.)
B 45	267 (10.51)	106 (4.17)	111.5 (4.39)	77.5 (3.05)	80 (3.15)	1"	3/4"	0.183 (1.97)
B 70	345 (13.58)		175 (6.89)	85 (3.35)				0.259 (2.79)
B 130	395 (15.55)		225 (8.86)					0.307 (3.30)
B 180	383 (15.08)	128 (5.04)	193 (7.60)	95 (3.74)	101.6 (4.0)	1-1/2"	1"	0.465 (4.91)
B 250	513 (20.20)		323 (12.72)					0.677 (7.29)
B 300	632 (24.88)		442 (17.40)					0.871 (9.38)
B 400	747 (29.41)		557 (21.93)					1.058 (11.39)
B 500	1085 (42.72)		884 (34.80)					1.609 (17.32)
B 1000	917 (36.10)	167 (6.57)	676.5 (26.63)	120 (4.72)	139.7 (5.5)	2"	2"	2.200 (23.68)

Table 6 Advanced B Series Titanium

Type	L	A	B	C	D	F	G	Heat Transfer Area
			mm (in)					m ² (sq.ft.)
B 45	267 (10.51)	115 (4.53)	101.5 (3.97)	83 (3.27)	88.9 (3.5)	1"	3/4"	0.171 (1.84)
B 70	345 (13.58)		164 (6.46)	90.5 (3.56)				0.247 (2.66)
B 130	395 (15.55)		214 (8.43)					0.295 (3.18)
B 180	383 (15.08)	141 (5.55)	196 (7.72)	93.5 (3.68)	114.3 (4.5)	1-1/2"	1"	0.465 (4.91)
B 250	513 (20.20)		326 (12.83)					0.677 (7.29)
B 300	632 (24.88)		445 (17.52)					0.871 (9.38)
B 400	747 (29.41)		560 (22.05)					1.058 (11.39)
B 500	1085 (42.72)		887 (34.92)					99 (3.90)
B 1000	912 (35.91)	167 (6.57)	676.5 (26.63)	117 (4.6)	139.7 (5.5)	2"	2"	2.160 (23.25)

Our stringent quality processes and management systems fulfill and are certified to the requirements of **ISO9001**.

AIC heat exchangers are designed, tested, and manufactured according to ASME Code Section VIII, Div.1 and will bear the U or UM stamp accordingly.

Our products are certified by many national and international technical inspection authorities: Canadian CRN, CSA, UL, HLW, H, PED(97/23/EC).

We can also work closely with our clients to design products to meet their exact criteria.



www.myaic.com



ADVANCED INDUSTRIAL COMPONENTS
2300 Bristol Circle, Unit 4
Oakville, Ontario L6H 5S3
tel: (905) 829 4666, fax: (905) 829 4646
Toll Free: 1 888 738 1350
www.myaic.com

Authorized Representative