

A Device for Instant Visual Balancing of Hydronic Systems

The Thermoflo Balancer is a visual flow indicator with a dual flow scale calibrated in gallons and liters per minute. This unique product provides both circuit balance and visual flow indication. It can be serviced without breaking the piping connections. The 3/4" Model can be adapted for installation in 1/2" and 1" piping. The 1" Model can be adapted for installation in 3/4", 1 1/4" and 1 1/2" piping. (See charts on back for maximum flow rates.)

Thermoflo Balancers can be installed in any position with the directional arrow pointing downstream. Designed for use with water with a pH range of 7 to 9. The maximum working pressure and temperature is 125 psig and 250°F, respectively.

Thermoflo Balancers installed in each circuit or zone can reduce operating costs when the system is properly balanced.



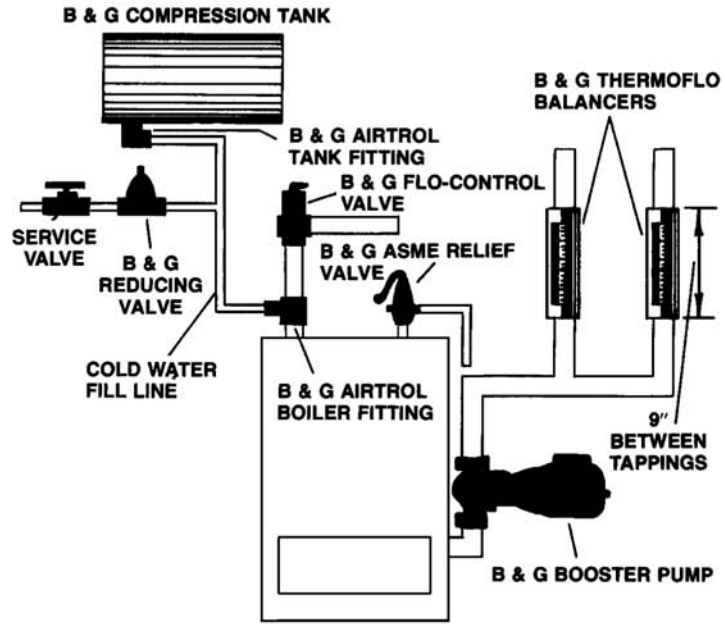
Thermoflo® Balancer

TYPICAL INSTALLATION

TYPICAL APPLICATION OF B&G THERMOFLO BALANCERS IN FORCED HYDRONIC HEATING SYSTEM

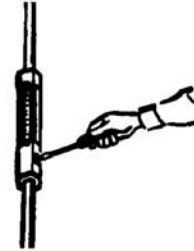
NOTE!! As is true of all visual flow indicators, precautions against water damage from accidental sight glass breakage should dictate balancer location.

Maximum Working Pressure 125 psig
Maximum Operating Temperature 250°F



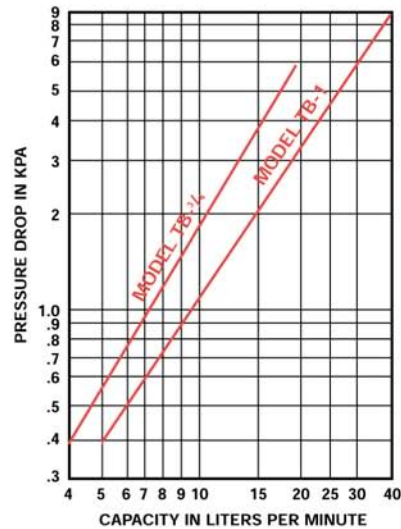
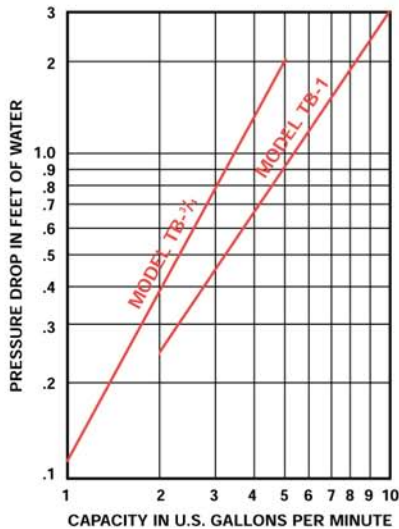
DIMENSIONS & WEIGHTS

MODEL NO.	INLET AND OUTLET SIZE INCHES NPT	DIMENSIONS				APPROX. SHPG. WT.	
		DIAMETER		LENGTH		LBS	KG
		IN	MM	IN	MM		
TB-3/4	3/4	2	51	9 1/4	235	4	2
TB-1	1						



A screwdriver is the only tool needed to adjust the B & G ThermoFlo Balancer for the desired flow rate.

PERFORMANCE CHARACTERISTICS



xylem
Let's Solve Water

Xylem Inc.
8200 N. Austin Avenue
Morton Grove, Illinois 60053
Phone: (847) 966-3700
Fax: (847) 965-8379
www.xylem.com/brands/bellgossett

Bell & Gossett is a trademark of Xylem Inc. or one of its subsidiaries.
© 2012 Xylem Inc. A-404C May1996