

Model 1000 (A,M)

Elite Series Humidifier
Residential Whole-House (GFI #5730 & #5735)

Breathe Healthier

Control Indoor Humidity.

Installing a GeneralAire® Whole House Humidifier can reduce allergy and asthma symptoms, minimize risk of infection, protect valuables (such as furniture, woodwork and musical instruments) and save you money.



How the 1000 Works:

A fan inside the 1000 pulls warm air through the unit and its highly-evaporative Vapor Pad®. Moistened air is then delivered throughout your home via your home's duct system for improved air quality and comfort.

Details inside or go to: www.generalfilters.com/model1000

Install a humidifier in your home to:

Protect your family's health:

Low humidity is where viruses can thrive and cause your throat and nasal passages to dry. This leads to nose bleeds, increased risk of infection, colds, flu and other respiratory ailments. Dry air can trigger asthma and allergy symptoms. Air that's too dry causes dry/itchy/cracked skin.

Protect Your Valuables:

Dry air in your home can cause expensive artwork, wood flooring, cabinets, furniture and musical instruments to crack. Dry air increases annoying static shocks that can damage electronics.

Save money:

Since dry air can cause woodwork to crack, resulting gaps in windows & doors let cold outside air in. In addition, dry air feels colder. Take the chill out with a 1000. Turn your thermostat down and save money.

Manufacturers of Whole House Residential Indoor Air Quality Products.
Humidifiers - Dehumidifiers - Air Cleaners - UV Air Purifiers - Heat/Energy Recovery Ventilators

www.generalfilters.com



Model 1000 (A,M)

Elite Series Humidifier
Residential Whole-House (GFI #5730 & #5735)

Why Whole-House Humidification Vs Portable Room Units?

See the top reasons below why a whole-house humidifier is a better option for your home than a portable room unit:

	GeneralAire® Model 1000 Whole House Humidifier	Portable Humidifier Units
Controls humidity in every room of your house	Yes. You will benefit from proper humidification throughout your home.	No. You'll need to purchase a unit for every room in your house.
Quiet Operation	Yes. Your system will be so quiet you'll forget it's there.	No. Portable units are noisy and take up space in your rooms.
Minimal Maintenance	Yes. Maintenance is only one time per year!	No. You'll need to constantly be re-filling and cleaning water pans.

Selecting a Humidifier

Considerations for selecting a whole house humidifier can include:

1. Size of your home
2. Number Of HVAC systems in your home
3. Type of humidification preferred
4. Maintenance requirements
5. Age of your home
6. Your climate
7. Cost to operate
8. Home building / woodwork projects

We recommend speaking with a licensed contractor for assistance with your humidifier selection and installation. Use our "Find a Contractor" tool on www.generalfilters.com for a list of contractors in your area.

Ideal Humidity Level

Research has shown that 40% to 60% relative humidity provides a comfortable and healthy environment for your woodwork, furniture, plants, your pets and especially you and your family.

How Much Humidity Do I Need?

Calculate the Total Cubic Feet of Home

Total Home Square Footage X Average Ceiling Height
(Include the basement)

Calculate the Load (lbs/hr)

Total Cubic Feet X Desired Condition Factor
(Table Below)
X 1.05 For Each Fireplace

Calculate Gallons Per Day (GPD)

Gallons Per Day = Load (lbs/hr) X 2.88

Indoor Air Temp °F	Indoor RH%			
	35%	40%	45%	50%
68	0.00015	0.00018	0.00021	0.00024
70	0.00017	0.00020	0.00023	0.00026
72	0.00019	0.00022	0.00025	0.00028



Use the Humidification Calculator on our website to assist you in selecting the right humidifier for your home.

www.generalfilters.com/humiditycalculator

Model 1000 (A,M)

Elite Series Humidifier
Residential Whole-House (GFI #5730 & #5735)

Quiet Operation

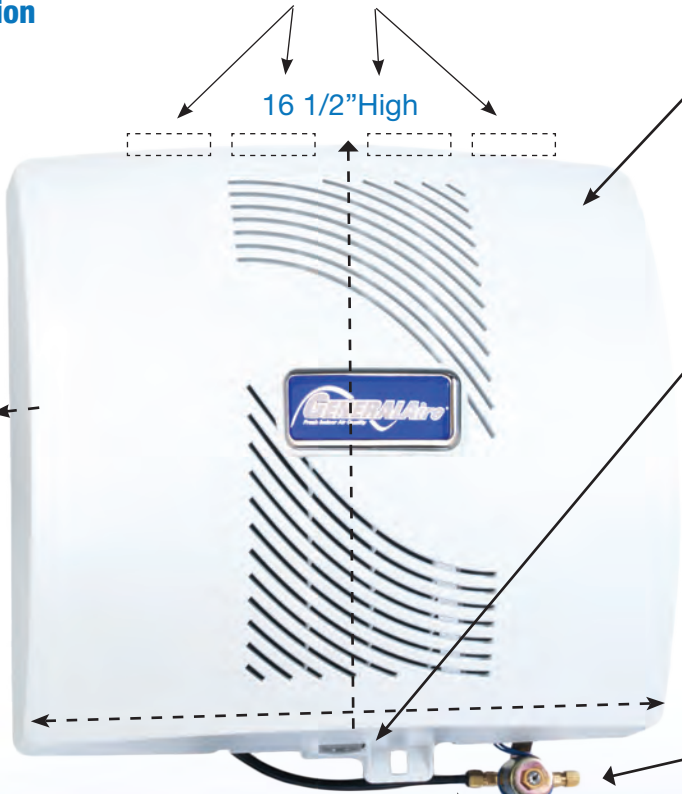
- You'll forget it's there!

Flange (Illustration Only)

16 1/2" High

10" Deep

16" Wide



Easy-Access Lift-Off Cover

- For simple Vapor Pad® replacement and maintenance
- Constructed with DuraPlast®, an ultra-violet stable automotive-grade plastic for long-lasting durability.
- Easy to clean
- Easy to remove. No tools needed.

Cover Release Tab (Four on Top Also)

- To remove cover: gently release tab at bottom of unit and pull cover away. To replace cover: Hang first on top flange (4 tabs), hear bottom tab "click" in place when fully engaged. Since the fan is attached to the inside cover, it is slightly heavier than other models.

Water Intake Valve

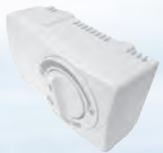
- Water is automatically distributed throughout the Vapor Pad®.

24 Volt
Low Voltage Wiring

Included

MHX3C Manual Humidistat

Included with Manual (M) Models



Easy-to-Use Dial

Simply turn the dial to the desired humidity level for your comfort.

Mount on Wall or Duct.

Contemporary Design

Maintenance

Maintenance of your new GeneralAire® 1000 Elite Series Flow Through Humidifier is minimal. To ensure peak performance and reliable operation, simply change your Vapor Pad® once per year! Go to www.generalfilters.com / support center / video library to view a video demonstrating how to change the Vapor Pad®.

Included

GFX3 Automatic Humidistat

Included with Automatic (A) Models

- Outdoor Sensor Included
- Can Be Used In Automatic
- Or Manual Mode
- Easy To Read Digital Backlit Display
- Easy To Install
- Extremely Accurate
- Wall Or Duct Mount
- Contemporary Design




Date of Installation: _____

Contractor's Contact Information:

Model 1000 (A,M)

Elite Series Humidifier
Residential Whole-House (GFI #5730 & #5735)

Model 1000 Specifications	
Gallons Per Day	18
Home Size	Up to 3,000 Sq. Ft.
Type	Flow Through Vapor Pad®
Unit Dimensions	16" W x 16 1/2" H x 10" D
Weight	15 Lbs.
Bypass Duct	6"
Plenum Opening	14" W x 12" H
Operation	Water Evaporation Via Furnace Heat & Fan
Valve	A Models Include GCV3412 Code Valve; M Models Feature a Saddle Valve
Vapor Pad®	GA19 (GFI#7919) (Replace Once Per Year)
Pallet Quantity	24
Mounting	Warm Air Plenum
Warranty	Ten Years 

1000 Performance Baseline Criteria	
Outside Design Temp	0° F (-18° C)
Outside Design RH	70%
Inside Design Temp	70° F (21° C)
Inside Design RH	30%
Ceiling Height	8'
Plenum Temperature	120° F (49° C)
Loose (.75 ACH)	1175 Sq. Ft.
Average (.50 ACH)	1770 Sq. Ft.
Tight (.30 ACH)	3000 Sq. Ft.
<ul style="list-style-type: none"> • Test results are from cold water application • GPD shown is at 120° Plenum Temperature • Performance assumes 8 hour average furnace run time in 24-hour period. 	

Inside the Box

- Model Elite 1000 Flow Through Humidifier
- Vapor Pad® (Inside Unit)
- GCV Code Valve (A Units Only)
- Warranty Card
- Humidistat:
- Installation Manual GFX3 - A / Automatic Units
- Instructional Template MHX3 - M / Manual Units
- Field Wiring Instructions
- Parts Bag



Purchase replacement parts from your local wholesaler, a licensed contractor or from our website:
www.generalfilters.com/shop-iaq-parts.html



www.generalfilters.com



Our Other Brands



Canadian General Filters, Ltd.
400 Midwest Rd.
Toronto, ON M1P3A9 Canada
Toll Free: (888) 216-9184
www.cgfproducts.com



General Filters, Inc.
43800 Grand River Avenue
Novi, Michigan 48375
Toll Free: (866) 476-5101
www.generalaire.com

Last Updated: 2-2015

Visit www.generalaire.com (Click on "Literature") to download GeneralAire® brochures, installation manuals and product guides. All information subject to change without notice.